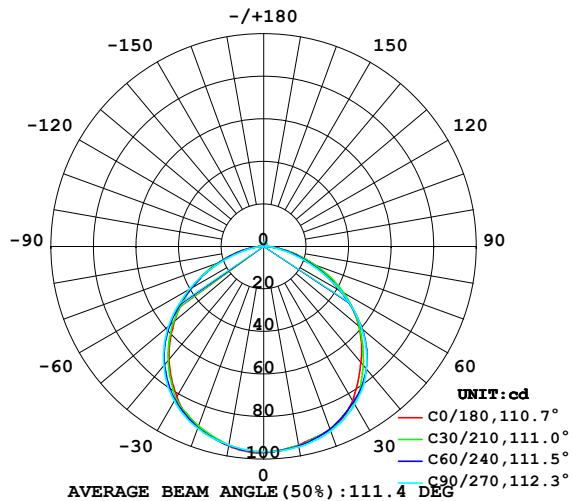


LUMINAIRE PHOTOMETRIC TEST REPORT

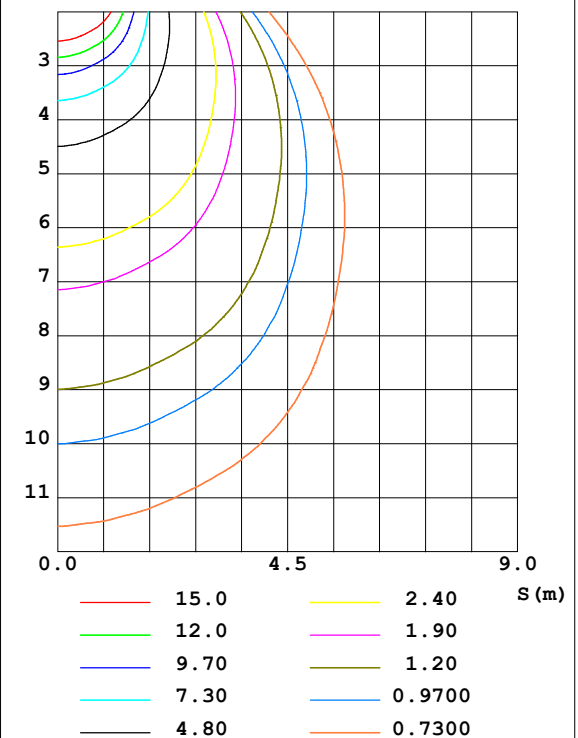
Test:U:24.00V I:0.1685A P:4.044W PF:1.000 Lamp Flux:280.647x1 lm		
NAME: SP01-24V-5050-60-RGBW-5000K-80-G	TYPE: 硅胶	WEIGHT:
DIM.: 15mm*7mm	SPEC.:	SERIAL No.:20221223
MFR.: OLYMPIA	SUR.:1*0.0015	PROTECTION ANGLE:

DATA OF LAMP		PHOTOMETRIC DATA Eff: 69.40 lm/W			
MODEL	5050	I _{max} (cd)	97.18	S/MH (C0/180)	1.27
NOMINAL POWER (W)	17	LOR (%)	100.0	S/MH (C90/270)	1.32
RATED VOLTAGE (V)	24	TOTAL FLUX (lm)	280.65	η UP, DN (C0-180)	1.5, 49.3
NOMINAL FLUX (lm)	280.647	CIE CLASS	DIRECT	η UP, DN (C180-360)	1.2, 48.0
LAMPS INSIDE	1	η up (%)	2.7	CIBSE SHR NOM	1.25
TEST VOLTAGE (V)	24.0	η down (%)	97.3	CIBSE SHR MAX	1.35

LUMINOUS INTENSITY DISTRIBUTION DIAGRAM



C0 PLANE ISOLUX DIAGRAM (UNIT:lx)



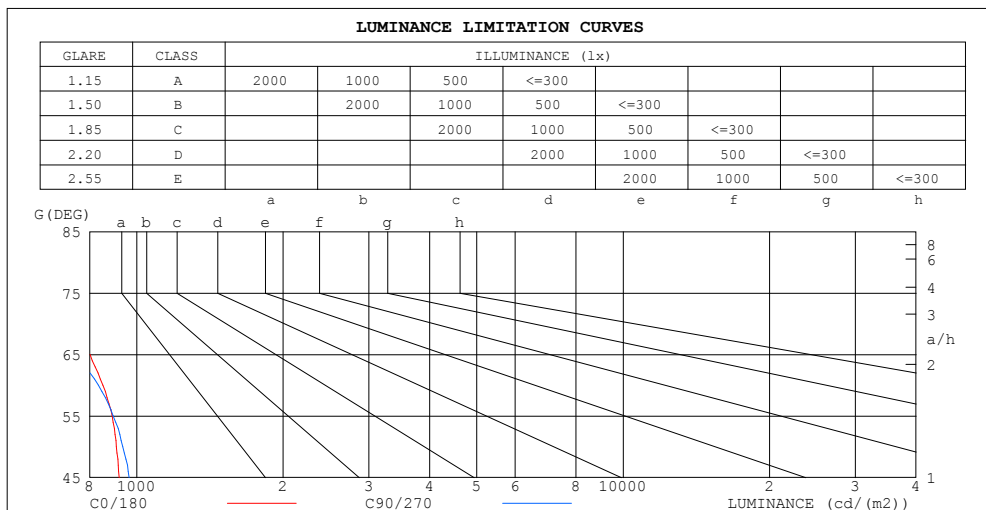
C Range: 0 - 360DEG
C Interval: 30.0DEG
Test Speed: HIGH
Temperature: 25.3DEG
Operators: WFW
Test Date: 2022-12-15

γ Range: 0 - 180DEG
γ Interval: 1.0DEG
Test System: EVERFINE GO-2000B_V1 SYSTEM V2.0.269
Humidity: 65.0%
Test Distance: 10.800m [K=1.0000]
Remarks:

ZONAL FLUX DIAGRAM
AND LUMINANCE LIMITATION CURVES

ZONAL FLUX DIAGRAM:

γ	C0	C45	C90	C135	C180	C225	C270	C315	γ	Φ zone	Φ total	%lum, lamp
10	94.72	95.13	95.64	95.15	95.25	94.98	94.80	93.94	0- 10	9.131	9.131	3.25,3.25
20	91.57	91.45	92.40	90.81	90.10	90.17	90.91	89.97	10- 20	26.29	35.42	12.6,12.6
30	83.70	84.96	85.67	83.88	81.66	82.88	83.89	83.30	20- 30	40.45	75.87	27,27
40	71.16	74.01	75.07	72.43	69.26	71.22	73.09	72.58	30- 40	49.09	125.0	44.5,44.5
50	58.40	59.58	60.14	57.96	54.83	56.54	58.52	58.51	40- 50	50.61	175.6	62.6,62.6
60	42.57	42.30	41.72	40.67	39.48	39.38	40.48	41.67	50- 60	44.43	220.0	78.4,78.4
70	25.64	24.62	22.07	23.63	22.46	22.76	21.26	24.45	60- 70	31.81	251.8	89.7,89.7
80	10.15	9.417	7.436	9.323	9.053	8.780	6.671	9.359	70- 80	16.69	268.5	95.7,95.7
90	1.222	1.108	1.046	1.182	0.8357	0.7694	0.7012	0.7384	80- 90	4.517	273.0	97.3,97.3
100	0.9904	1.080	1.191	1.074	0.6166	0.6340	0.7681	0.6546	90-100	0.9147	273.9	97.6,97.6
110	1.087	1.254	1.434	1.247	0.7897	0.8138	1.046	0.7930	100-110	1.023	275.0	98,98
120	1.274	1.368	1.544	1.378	0.9697	0.9904	0.9834	0.9420	110-120	1.102	276.1	98.4,98.4
130	1.385	1.479	1.586	1.493	1.157	1.160	1.156	1.119	120-130	1.116	277.2	98.8,98.8
140	1.510	1.565	1.662	1.603	1.351	1.344	1.309	1.312	130-140	1.070	278.2	99.1,99.1
150	1.614	1.659	1.731	1.676	1.544	1.531	1.496	1.475	140-150	0.9555	279.2	99.5,99.5
160	1.731	1.759	1.808	1.770	1.704	1.690	1.641	1.648	150-160	0.7641	280.0	99.8,99.8
170	1.828	1.839	1.863	1.839	1.849	1.811	1.766	1.777	160-170	0.5019	280.5	99.9,99.9
180	1.863	1.853	1.856	1.842	1.863	1.853	1.849	1.856	170-180	0.1756	280.6	100,100
DEG	LUMINOUS INTENSITY:cd									UNIT:lm		



LUMINANCE cd/(m2)		
G (DEG)	C0/180	C90/270
85	480	372
80	584	428
75	678	532
70	750	645
65	802	749
60	851	834
55	890	895
50	908	936
45	921	964

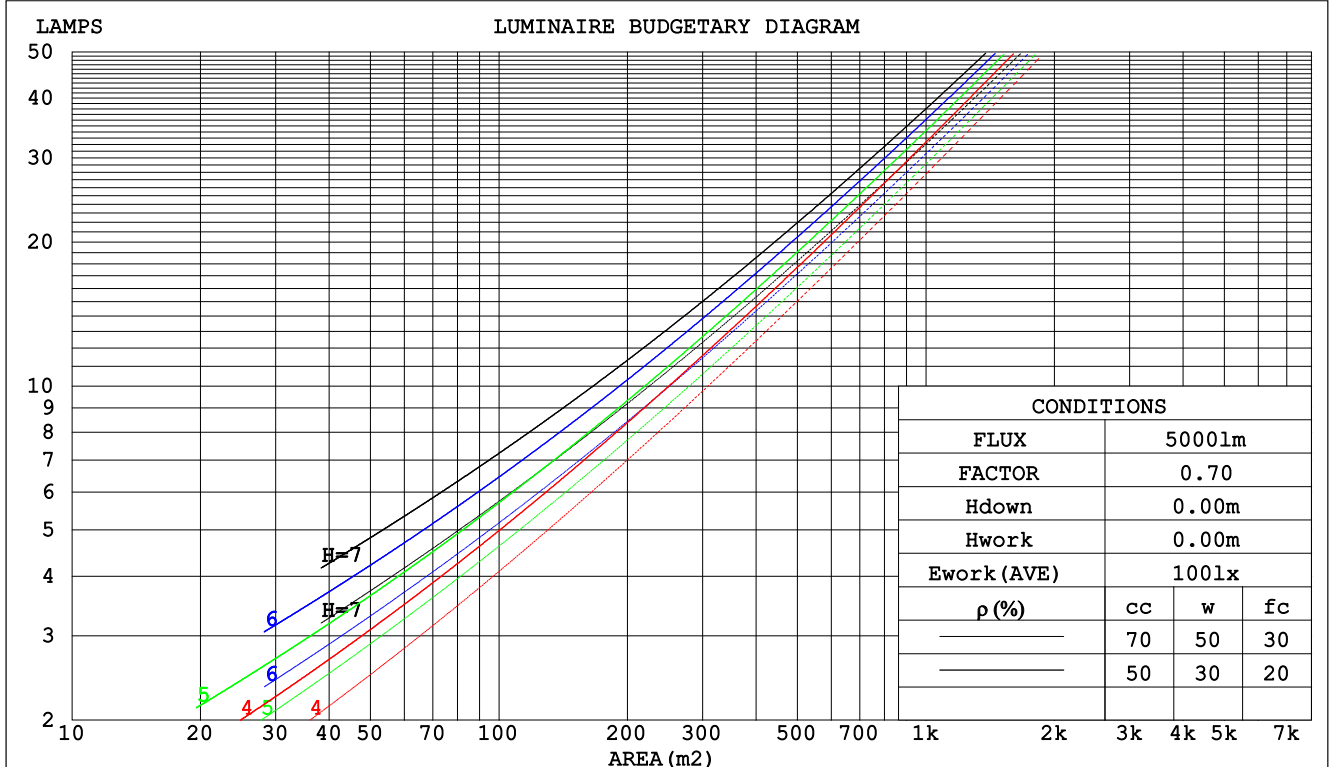
C Range: 0 - 360DEG
C Interval: 30.0DEG
Test Speed: HIGH
Temperature:25.3DEG
Operators:WFW
Test Date:2022-12-15

γ Range: 0 - 180DEG
 γ Interval: 1.0DEG
Test System:EVERFINE GO-2000B_V1 SYSTEM V2.0.269
Humidity:65.0%
Test Distance:10.800m [K=1.0000]
Remarks:

CU AND LUMINAIRE BUDGETARY ESTIMATE DIAGRAM

Test:U:24.00V I:0.1685A P:4.044W PF:1.000 Lamp Flux:280.647x1 lm		
NAME: SP01-24V-5050-60-RGBW-5000K-80-G	TYPE: 硅胶	WEIGHT:
DIM.: 15mm*7mm	SPEC.:	SERIAL No.:20221223
MFR.: OLYMPIA	SUR.:1*0.0015	PROTECTION ANGLE:

pcc	80%			70%			50%			30%			10%			0
pw	50%	30%	10%	50%	30%	10%	50%	30%	10%	50%	30%	10%	50%	30%	10%	0
pfc	20%			20%			20%			20%			20%			0
RCR	RCR:Room Cavity Ratio						Coefficients of Utilization(CU)									
0.0	1.18	1.18	1.18	1.15	1.15	1.15	1.10	1.10	1.10	1.04	1.04	1.04	.00	.00	.00	.97
1.0	1.04	.00	.96	1.01	.97	.94	.96	.93	.91	.92	.90	.87	.88	.86	.84	.82
2.0	.91	.84	.78	.88	.82	.77	.84	.79	.75	.81	.77	.73	.77	.74	.71	.69
3.0	.80	.72	.65	.78	.70	.64	.75	.68	.63	.71	.66	.62	.69	.64	.60	.58
4.0	.71	.62	.55	.69	.61	.55	.66	.59	.54	.64	.58	.53	.61	.56	.52	.49
5.0	.63	.54	.48	.62	.53	.47	.59	.52	.46	.57	.51	.46	.55	.49	.45	.43
6.0	.57	.48	.42	.56	.47	.41	.54	.46	.41	.52	.45	.40	.50	.44	.40	.37
7.0	.51	.43	.37	.50	.42	.36	.49	.41	.36	.47	.40	.36	.45	.40	.35	.33
8.0	.47	.38	.33	.46	.38	.32	.45	.37	.32	.43	.37	.32	.42	.36	.31	.29
9.0	.43	.35	.29	.42	.35	.29	.41	.34	.29	.40	.33	.29	.39	.33	.28	.26
10.0	.40	.32	.27	.39	.32	.26	.38	.31	.26	.37	.30	.26	.36	.30	.26	.24



C Range: 0 - 360DEG
C Interval: 30.0DEG
Test Speed: HIGH
Temperature:25.3DEG
Operators:WFW
Test Date:2022-12-15

γ Range: 0 - 180DEG
γ Interval: 1.0DEG
Test System:EVERFINE GO-2000B_V1 SYSTEM V2.0.269
Humidity:65.0%
Test Distance:10.800m [K=1.0000]
Remarks:

WEC AND CCEC

Test:U:24.00V I:0.1685A P:4.044W PF:1.000 Lamp Flux:280.647x1 lm					
NAME: SP01-24V-5050-60-RGBW-5000K-80-G			TYPE: 硅胶		WEIGHT:
DIM.: 15mm*7mm			SPEC.:		SERIAL No.:20221223
MFR.: OLYMPIA			SUR.:1*0.0015		PROTECTION ANGLE:

pcc	80%			70%			50%			30%			10%			0	
pw	50%	30%	10%	50%	30%	10%	50%	30%	10%	50%	30%	10%	50%	30%	10%	0	
pfc	20%			20%			20%			20%			20%			0	
RCR	RCR:Room Cavity Ratio						Wall Exitance Coefficients(WEC)										
0.0																	
1.0	.300	.171	.054	.292	.167	.053	.278	.159	.051	.264	.152	.049	.252	.146	.047		
2.0	.284	.156	.048	.277	.153	.047	.264	.147	.046	.252	.141	.044	.241	.136	.043		
3.0	.264	.140	.042	.258	.138	.042	.246	.133	.041	.235	.129	.040	.225	.125	.039		
4.0	.244	.127	.037	.239	.125	.037	.229	.121	.036	.219	.118	.035	.210	.114	.035		
5.0	.227	.115	.033	.222	.114	.033	.212	.111	.033	.204	.108	.032	.196	.105	.031		
6.0	.211	.106	.030	.206	.104	.030	.198	.101	.030	.190	.099	.029	.183	.096	.029		
7.0	.196	.097	.028	.192	.096	.027	.185	.093	.027	.178	.091	.027	.171	.089	.026		
8.0	.184	.090	.025	.180	.089	.025	.173	.087	.025	.167	.085	.024	.161	.083	.024		
9.0	.172	.083	.023	.169	.082	.023	.163	.081	.023	.157	.079	.023	.152	.077	.022		
10.0	.162	.078	.022	.159	.077	.021	.154	.075	.021	.148	.074	.021	.143	.072	.021		

pcc	80%			70%			50%			30%			10%			0
pw	50%	30%	10%	50%	30%	10%	50%	30%	10%	50%	30%	10%	50%	30%	10%	0
pfc	20%			20%			20%			20%			20%			0
RCR	RCR:Room Cavity Ratio						Ceiling Cavity Exitance Coefficients(CCEC)									
0.0	.211	.211	.211	.180	.180	.180	.123	.123	.123	.071	.071	.071	.023	.023	.023	
1.0	.201	.177	.156	.172	.152	.134	.117	.105	.093	.068	.061	.054	.022	.019	.017	
2.0	.192	.153	.120	.165	.132	.104	.113	.091	.072	.065	.053	.042	.021	.017	.014	
3.0	.184	.135	.096	.158	.117	.083	.109	.081	.059	.063	.047	.035	.020	.015	.011	
4.0	.177	.122	.080	.152	.105	.070	.104	.074	.049	.060	.043	.029	.019	.014	.010	
5.0	.170	.112	.069	.146	.097	.060	.100	.068	.042	.058	.040	.025	.019	.013	.008	
6.0	.163	.103	.061	.140	.090	.053	.096	.063	.038	.056	.037	.022	.018	.012	.007	
7.0	.156	.097	.055	.134	.084	.048	.093	.059	.034	.054	.035	.020	.017	.011	.007	
8.0	.150	.091	.050	.129	.079	.044	.089	.055	.031	.052	.033	.019	.017	.011	.006	
9.0	.144	.086	.047	.124	.075	.041	.086	.052	.029	.050	.031	.017	.016	.010	.006	
10.0	.138	.082	.044	.119	.071	.038	.083	.050	.027	.048	.029	.016	.016	.010	.005	

C Range: 0 - 360DEG
 C Interval: 30.0DEG
 Test Speed: HIGH
 Temperature:25.3DEG
 Operators:WFW
 Test Date:2022-12-15

γ Range: 0 - 180DEG
 γ Interval: 1.0DEG
 Test System:EVERFINE GO-2000B_V1 SYSTEM V2.0.269
 Humidity:65.0%
 Test Distance:10.800m [K=1.0000]
 Remarks:

Uncorrected UGR Table

Test:U:24.00V I:0.1685A P:4.044W PF:1.000 Lamp Flux:280.647x1 lm										
NAME: SP01-24V-5050-60-RGBW-5000K-80-G					TYPE: 硅胶			WEIGHT:		
DIM.: 15mm*7mm					SPEC.:			SERIAL No.:20221223		
MFR.: OLYMPIA					SUR.:1*0.0015			PROTECTION ANGLE:		
ceiling/cavity	0.7	0.7	0.5	0.5	0.3	0.7	0.7	0.5	0.5	0.3
walls	0.5	0.3	0.5	0.3	0.3	0.5	0.3	0.5	0.3	0.3
working plane	0.2	0.2	0.2	0.2	0.2	0.2	0.2	0.2	0.2	0.2
Room dimensions	Viewed crosswise					Viewed endwise				
x = 2H y = 2H	12.4	13.9	12.7	14.1	14.4	12.3	13.8	12.7	14.1	14.3
3H	13.8	15.2	14.2	15.5	15.8	13.5	14.9	13.8	15.1	15.4
4H	14.4	15.7	14.7	16.0	16.3	13.9	15.2	14.2	15.5	15.8
6H	14.7	15.9	15.1	16.3	16.6	14.1	15.3	14.5	15.6	16.0
8H	14.8	16.0	15.2	16.3	16.7	14.2	15.3	14.5	15.6	16.0
12H	14.9	16.0	15.3	16.3	16.7	14.2	15.3	14.6	15.6	16.0
4H 2H	13.0	14.3	13.3	14.6	14.9	12.9	14.2	13.2	14.5	14.8
3H	14.6	15.7	15.0	16.0	16.4	14.2	15.4	14.6	15.7	16.1
4H	15.2	16.2	15.6	16.6	17.0	14.7	15.8	15.1	16.1	16.5
6H	15.7	16.6	16.1	17.0	17.4	15.1	16.0	15.5	16.4	16.8
8H	15.8	16.7	16.3	17.1	17.5	15.1	16.0	15.6	16.4	16.8
12H	15.9	16.7	16.4	17.1	17.6	15.2	16.0	15.7	16.4	16.9
8H 4H	15.4	16.2	15.9	16.7	17.1	15.0	15.8	15.4	16.2	16.7
6H	16.0	16.7	16.5	17.2	17.6	15.4	16.1	15.9	16.6	17.1
8H	16.2	16.8	16.7	17.3	17.8	15.6	16.2	16.1	16.7	17.2
12H	16.4	16.9	16.9	17.4	17.9	15.7	16.2	16.2	16.7	17.2
12H 4H	15.4	16.2	15.9	16.6	17.1	15.0	15.7	15.4	16.2	16.6
6H	16.0	16.7	16.5	17.1	17.6	15.5	16.1	16.0	16.6	17.1
8H	16.3	16.8	16.8	17.3	17.8	15.7	16.2	16.2	16.7	17.2
Variations with the observer position at spacings:										
S = 1.0H	+ 0.2 / - 0.2					+ 0.2 / - 0.3				
1.5H	+ 0.2 / - 0.4					+ 0.2 / - 0.4				
2.0H	+ 0.2 / - 0.3					+ 0.3 / - 0.3				

CIE Pub.117 Corrected 280.6 lm Total Lamp Luminous Flux. (8log(F/F0) = -4.4)

C Range: 0 - 360DEG
C Interval: 30.0DEG
Test Speed: HIGH
Temperature:25.3DEG
Operators:WFW
Test Date:2022-12-15

γ Range: 0 - 180DEG
γ Interval: 1.0DEG
Test System:EVERFINE GO-2000B_V1 SYSTEM V2.0.269
Humidity:65.0%
Test Distance:10.800m [K=1.0000]
Remarks:

UTILIZATION FACTORS TABLE

Test:U:24.00V I:0.1685A P:4.044W PF:1.000 Lamp Flux:280.647x1 lm		
NAME: SP01-24V-5050-60-RGBW-5000K-80-G	TYPE: 硅胶	WEIGHT:
DIM.: 15mm*7mm	SPEC.:	SERIAL No.:20221223
MFR.: OLYMPIA	SUR.:1*0.0015	PROTECTION ANGLE:

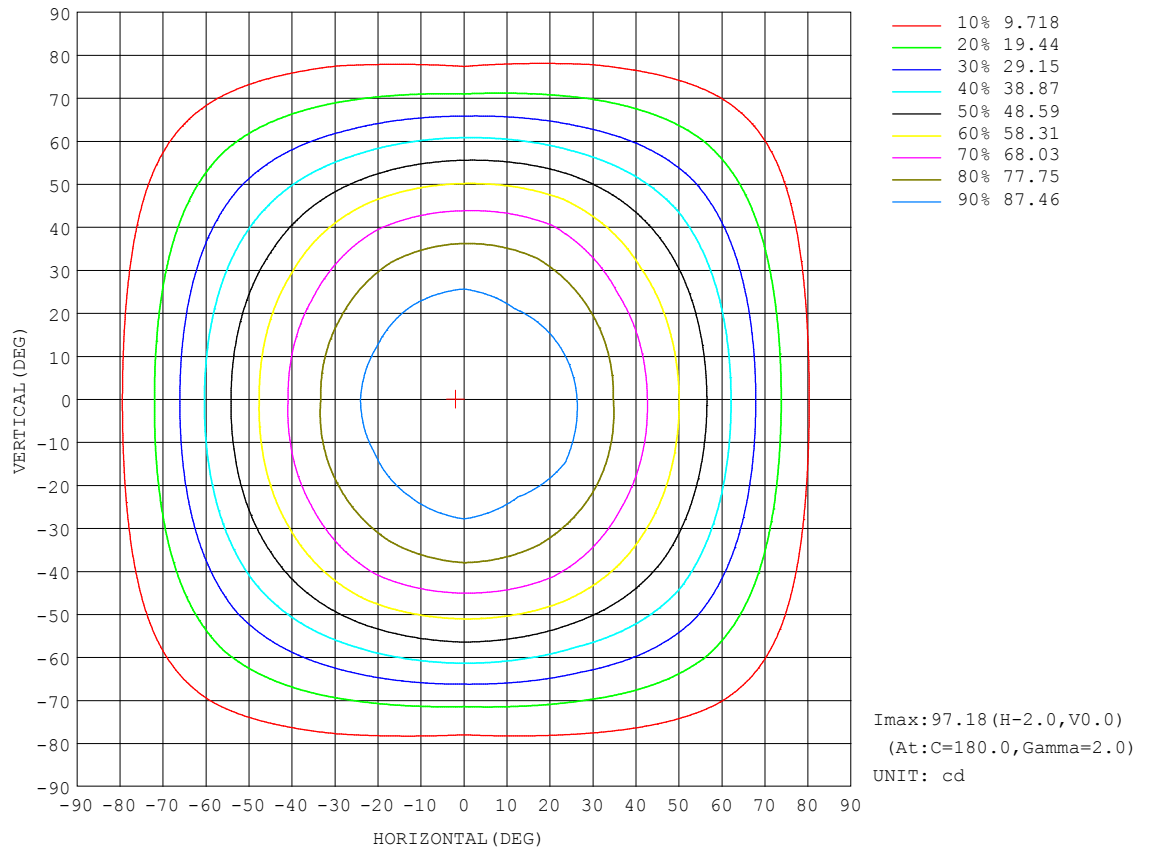
REFLECTANCE										
Ceiling	0.8	0.8	0.8	0.7	0.7	0.7	0.5	0.5	0.5	0
Walls	0.7	0.5	0.3	0.7	0.5	0.3	0.7	0.5	0.3	0
Working plane	0.2	0.2	0.2	0.2	0.2	0.2	0.2	0.2	0.2	0
ROOM INDEX	UTILIZATION FACTORS (PERCENT) $k(RI) \times RCR = 5$									
$k = 0.60$	57	46	39	56	45	39	55	45	38	32
0.80	67	56	49	66	55	48	64	54	48	41
1.00	76	65	58	75	64	57	72	65	57	49
1.25	83	73	66	81	72	65	78	70	64	57
1.50	88	78	71	86	77	71	83	75	69	62
2.00	95	86	80	93	85	79	89	82	77	69
2.50	99	91	85	96	89	84	92	86	82	73
3.00	102	95	90	100	93	88	95	90	86	77
4.00	106	100	96	103	98	94	99	94	91	81
5.00	108	103	99	106	101	98	101	97	94	84
ROOM INDEX	UF(total)									Direct
According to DIN EN 13032-2 2004			Suspended					SHRNM = 1.25		

C Range: 0 - 360DEG
 C Interval: 30.0DEG
 Test Speed: HIGH
 Temperature:25.3DEG
 Operators:WFW
 Test Date:2022-12-15

γ Range: 0 - 180DEG
 γ Interval: 1.0DEG
 Test System:EVERFINE GO-2000B_V1 SYSTEM V2.0.269
 Humidity:65.0%
 Test Distance:10.800m [K=1.0000]
 Remarks:

ISOCANDELA DIAGRAM

Test:U:24.00V I:0.1685A P:4.044W PF:1.000 Lamp Flux:280.647x1 lm		
NAME: SP01-24V-5050-60-RGBW-5000K-80-G	TYPE: 硅胶	WEIGHT:
DIM.: 15mm*7mm	SPEC.:	SERIAL No.:20221223
MFR.: OLYMPIA	SUR.:1*0.0015	PROTECTION ANGLE:

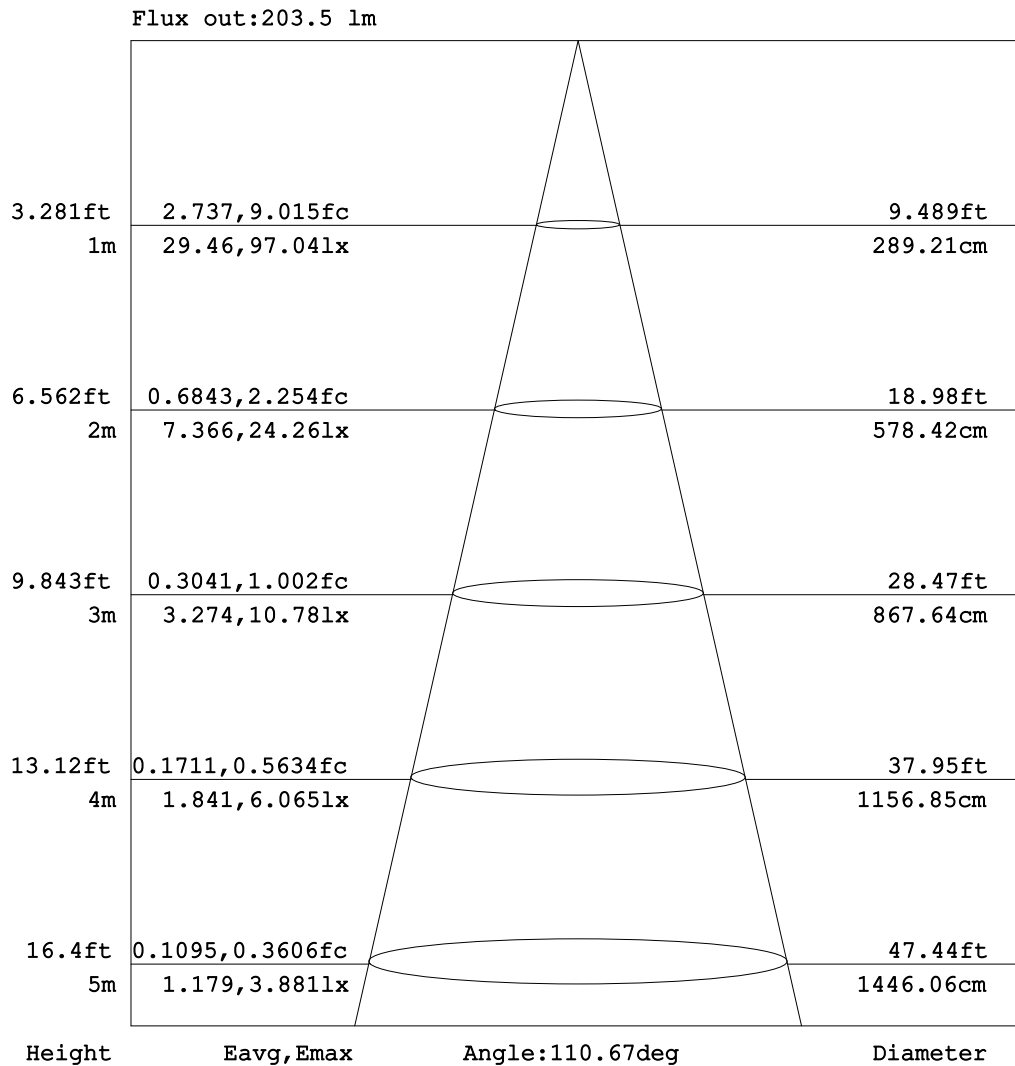


C Range: 0 - 360DEG
C Interval: 30.0DEG
Test Speed: HIGH
Temperature: 25.3DEG
Operators: WFW
Test Date: 2022-12-15

γ Range: 0 - 180DEG
 γ Interval: 1.0DEG
Test System: EVERFINE GO-2000B_V1 SYSTEM V2.0.269
Humidity: 65.0%
Test Distance: 10.800m [K=1.0000]
Remarks:

AAI Figure

Test:U:24.00V I:0.1685A P:4.044W PF:1.000 Lamp Flux:280.647x1 lm		
NAME: SP01-24V-5050-60-RGBW-5000K-80-G	TYPE: 硅胶	WEIGHT:
DIM.: 15mm*7mm	SPEC.:	SERIAL No.:20221223
MFR.: OLYMPIA	SUR.:1*0.0015	PROTECTION ANGLE:



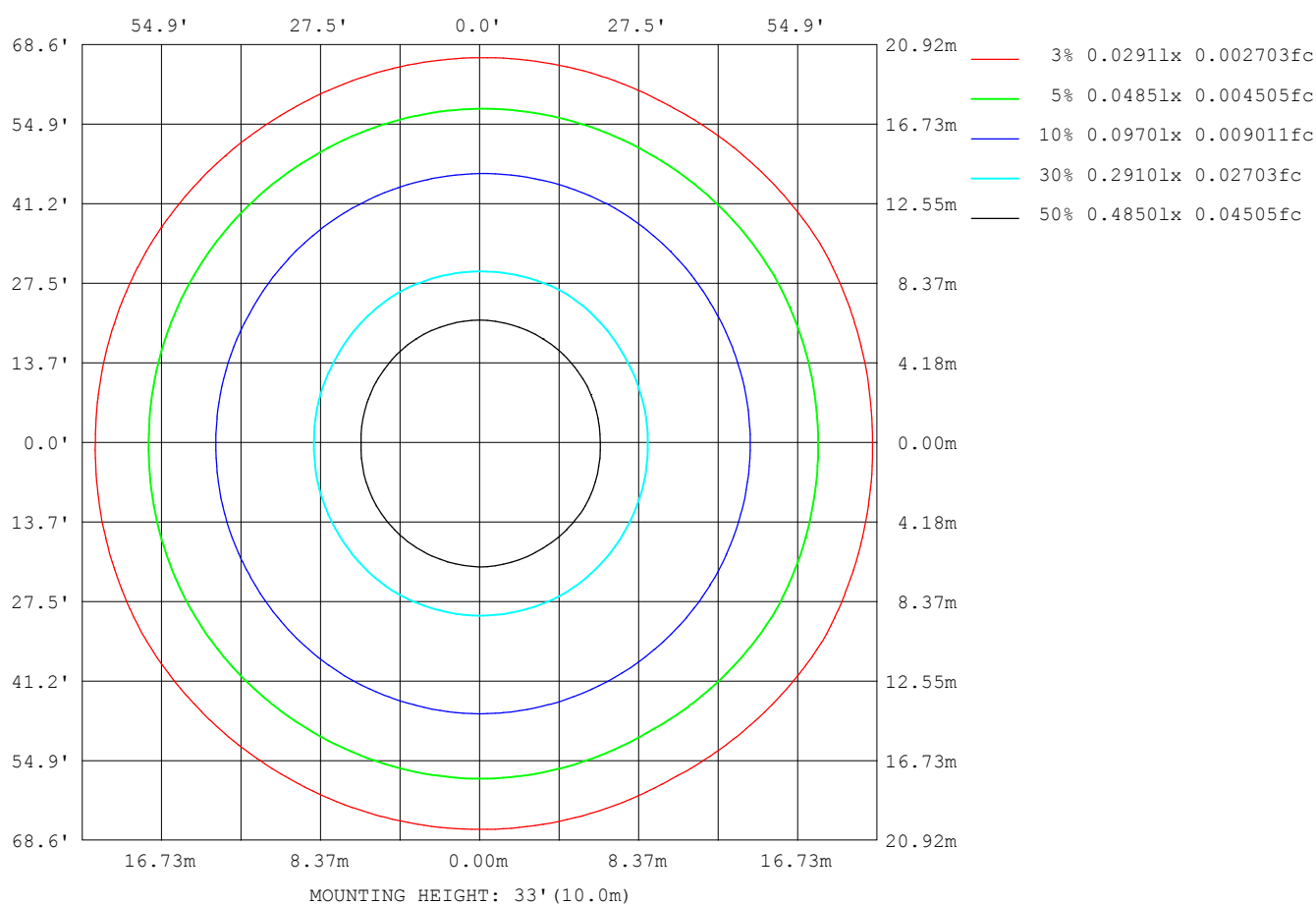
Note: The Curves indicate the illuminated area and the average illumination when the luminaire is at different distance.

C Range: 0 - 360DEG
C Interval: 30.0DEG
Test Speed: HIGH
Temperature: 25.3DEG
Operators: WFW
Test Date: 2022-12-15

γ Range: 0 - 180DEG
γ Interval: 1.0DEG
Test System: EVERFINE GO-2000B_V1 SYSTEM V2.0.269
Humidity: 65.0%
Test Distance: 10.800m [K=1.0000]
Remarks:

ISOLUX DIAGRAM

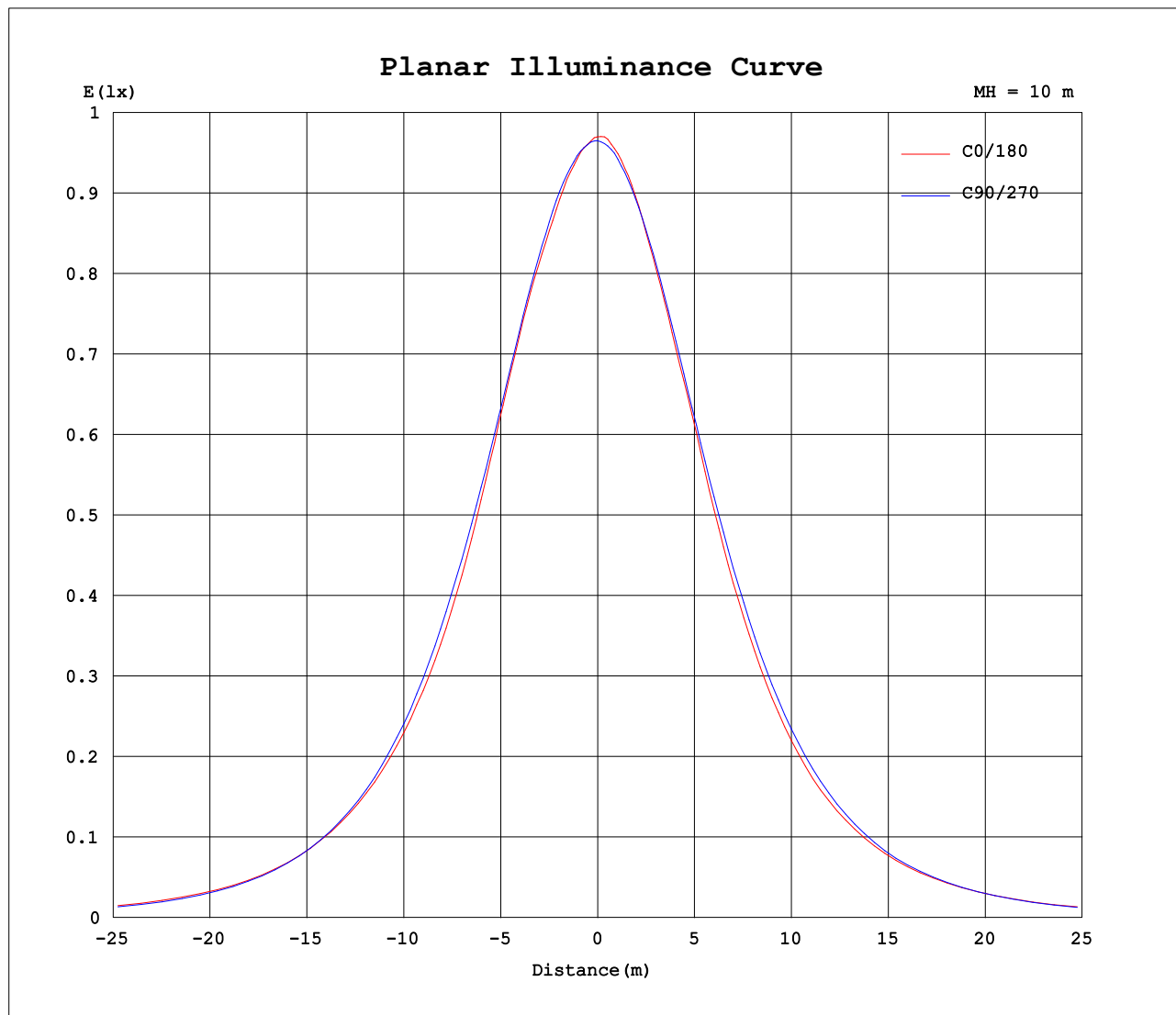
Test:U:24.00V I:0.1685A P:4.044W PF:1.000 Lamp Flux:280.647x1 lm		
NAME: SP01-24V-5050-60-RGBW-5000K-80-G	TYPE: 硅胶	WEIGHT:
DIM.: 15mm*7mm	SPEC.:	SERIAL No.:20221223
MFR.: OLYMPIA	SUR.:1*0.0015	PROTECTION ANGLE:



C Range: 0 - 360DEG
C Interval: 30.0DEG
Test Speed: HIGH
Temperature:25.3DEG
Operators:WFW
Test Date:2022-12-15

γ Range: 0 - 180DEG
 γ Interval: 1.0DEG
Test System:EVERFINE GO-2000B_V1 SYSTEM V2.0.269
Humidity:65.0%
Test Distance:10.800m [K=1.0000]
Remarks:

Planar Illuminance Curve



C Range: 0 - 360DEG
C Interval: 30.0DEG
Test Speed: HIGH
Temperature: 25.3DEG
Operators: WFW
Test Date: 2022-12-15

γ Range: 0 - 180DEG
 γ Interval: 1.0DEG
Test System: EVERFINE GO-2000B_V1 SYSTEM V2.0.269
Humidity: 65.0%
Test Distance: 10.800m [K=1.0000]
Remarks:

LUMINOUS DISTRIBUTION INTENSITY DATA

Test:U:24.00V I:0.1685A P:4.044W PF:1.000 Lamp Flux:280.647x1 lm		
NAME: SP01-24V-5050-60-RGBW-5000K-80-G	TYPE: 硅胶	WEIGHT:
DIM.: 15mm*7mm	SPEC.:	SERIAL No.:20221223
MFR.: OLYMPIA	SUR.:1*0.0015	PROTECTION ANGLE:

Table--1

UNIT: cd

C (DEG) γ (DEG)	0	30	60	90	120	150	180	210	240	270	300	330							
0	97.0	96.8	96.6	96.5	96.2	96.1	97.0	96.8	96.6	96.5	96.2	96.1							
5	96.2	96.1	96.2	96.3	96.4	95.9	96.6	96.3	96.3	96.0	95.4	95.2							
10	94.7	95.0	95.2	95.6	95.4	94.8	95.3	95.0	95.0	94.8	94.1	93.7							
15	93.1	93.0	93.4	94.2	94.0	92.7	92.7	92.4	93.0	93.2	92.3	91.6							
20	91.6	91.6	91.3	92.4	91.5	90.1	90.1	89.8	90.6	90.9	90.0	90.0							
25	88.6	89.3	88.0	89.5	88.0	86.9	86.9	86.3	87.2	87.9	86.7	87.6							
30	83.7	85.4	84.6	85.7	84.3	83.5	81.7	82.5	83.3	83.9	83.0	83.6							
35	77.4	79.5	80.5	81.1	79.7	77.5	75.6	76.3	78.4	79.0	79.0	78.1							
40	71.2	72.9	75.1	75.1	74.0	70.9	69.3	69.9	72.5	73.1	73.8	71.3							
45	65.1	66.1	68.5	68.2	67.7	64.0	62.3	63.0	65.8	66.3	67.3	64.3							
50	58.4	58.8	60.3	60.1	59.6	56.3	54.8	55.4	57.6	58.5	59.3	57.7							
55	51.1	51.3	51.1	51.3	50.3	48.3	47.3	47.3	48.4	49.6	50.7	50.4							
60	42.6	43.4	41.2	41.7	40.8	40.5	39.5	39.4	39.3	40.5	41.0	42.4							
65	33.9	35.0	32.0	31.6	31.6	32.4	31.1	31.4	30.4	30.8	31.6	34.3							
70	25.6	25.9	23.3	22.1	23.0	24.3	22.5	23.3	22.2	21.3	23.3	25.6							
75	17.6	17.5	15.7	13.8	15.4	16.3	15.2	15.5	14.9	12.9	15.6	17.2							
80	10.1	10.0	8.80	7.44	9.04	9.61	9.05	8.89	8.67	6.67	8.92	9.80							
85	4.18	4.15	3.52	3.24	4.06	4.39	3.98	3.82	3.72	2.77	3.55	3.96							
90	1.22	1.14	1.08	1.05	1.13	1.23	0.84	0.84	0.70	0.70	0.66	0.82							
95	1.00	1.03	1.03	1.16	1.01	1.00	0.53	0.55	0.64	0.69	0.64	0.59							
100	0.99	1.08	1.08	1.19	1.07	1.08	0.62	0.61	0.66	0.77	0.72	0.59							
105	1.01	1.15	1.18	1.31	1.16	1.16	0.70	0.66	0.81	1.05	0.80	0.63							
110	1.09	1.23	1.28	1.43	1.26	1.23	0.79	0.74	0.89	1.05	0.87	0.71							
115	1.16	1.30	1.34	1.50	1.34	1.31	0.87	0.84	0.97	0.96	0.95	0.81							
120	1.27	1.36	1.38	1.54	1.39	1.37	0.97	0.93	1.05	0.98	1.02	0.87							
125	1.31	1.42	1.41	1.57	1.44	1.44	1.07	1.01	1.13	1.05	1.10	0.96							
130	1.39	1.48	1.48	1.59	1.50	1.48	1.16	1.09	1.23	1.16	1.19	1.05							
135	1.44	1.52	1.50	1.63	1.53	1.55	1.25	1.20	1.31	1.23	1.27	1.16							
140	1.51	1.59	1.54	1.66	1.61	1.60	1.35	1.29	1.39	1.31	1.36	1.26							
145	1.57	1.64	1.60	1.69	1.61	1.66	1.45	1.39	1.48	1.39	1.44	1.33							
150	1.61	1.69	1.63	1.73	1.64	1.71	1.54	1.49	1.57	1.50	1.54	1.41							
155	1.70	1.75	1.66	1.76	1.70	1.76	1.63	1.57	1.65	1.58	1.62	1.51							
160	1.73	1.80	1.72	1.81	1.73	1.81	1.70	1.64	1.74	1.64	1.70	1.60							
165	1.77	1.85	1.76	1.85	1.77	1.84	1.79	1.72	1.80	1.71	1.76	1.67							
170	1.83	1.86	1.82	1.86	1.84	1.84	1.85	1.77	1.85	1.77	1.82	1.73							
175	1.85	1.86	1.84	1.86	1.84	1.84	1.86	1.83	1.86	1.84	1.86	1.81							
180	1.86	1.86	1.85	1.86	1.84	1.84	1.86	1.84	1.86	1.85	1.86	1.85							

C Range: 0 - 360DEG
C Interval: 30.0DEG
Test Speed: HIGH
Temperature:25.3DEG
Operators:WFW
Test Date:2022-12-15

γ Range: 0 - 180DEG
γ Interval: 1.0DEG
Test System:EVERFINE GO-2000B_V1 SYSTEM V2.0.269
Humidity:65.0%
Test Distance:10.800m [K=1.0000]
Remarks:

Photometric Data Table [cd]

G/C	0.0	30.0	60.0	90.0	120.0	150.0	180.0	210.0	240.0	270.0
0.0	96.99	96.75	96.57	96.50	96.25	96.09	96.99	96.75	96.57	96.50
3.0	96.44	96.32	96.55	96.39	96.45	96.29	97.09	96.82	96.58	96.24
6.0	95.81	95.91	96.08	96.23	96.22	95.69	96.47	96.12	96.18	95.75
9.0	95.17	95.13	95.39	95.76	95.59	95.01	95.68	95.23	95.25	95.05
12.0	94.01	94.40	94.62	95.23	95.00	94.10	94.39	93.90	94.34	94.20
15.0	93.09	93.03	93.44	94.24	93.99	92.73	92.75	92.39	93.03	93.22
18.0	92.39	92.15	92.29	93.25	92.63	91.24	91.27	90.88	91.73	91.99
21.0	91.24	91.33	90.71	91.89	90.78	89.51	89.29	89.09	89.90	90.39
24.0	89.38	89.97	88.74	90.17	88.75	87.53	87.50	87.06	88.00	88.64
27.0	86.86	87.81	86.64	88.06	86.64	85.76	85.11	85.13	85.76	86.50
30.0	83.70	85.36	84.56	85.67	84.28	83.47	81.66	82.50	83.26	83.89
33.0	79.90	82.19	82.19	83.03	81.72	80.18	78.07	78.90	80.54	81.14
36.0	76.16	78.14	79.40	80.08	78.59	76.24	74.51	75.23	77.31	77.97
39.0	72.30	74.16	76.26	76.45	75.14	72.36	70.64	71.25	73.81	74.31
42.0	68.77	70.04	72.56	72.52	71.52	68.45	66.53	67.22	69.99	70.50
45.0	65.10	66.12	68.52	68.17	67.71	64.04	62.27	62.97	65.84	66.33
48.0	61.18	61.62	63.75	63.62	63.10	59.57	57.67	58.48	61.09	61.67
51.0	57.02	57.44	58.65	58.47	57.79	54.83	53.30	53.59	55.80	56.71
54.0	52.56	52.74	53.16	53.18	52.24	49.86	48.87	48.79	50.29	51.62
57.0	47.76	48.12	47.20	47.59	46.35	45.33	44.15	43.83	44.82	45.79
60.0	42.57	43.36	41.24	41.72	40.83	40.51	39.48	39.41	39.34	40.48
63.0	37.28	38.26	35.66	35.57	35.20	35.65	34.51	34.39	33.92	34.65
66.0	32.09	33.15	30.18	29.67	29.86	30.70	29.25	29.78	28.68	28.72
69.0	27.31	27.71	24.94	23.80	24.67	25.83	24.06	25.03	23.72	23.11
72.0	22.39	22.45	20.17	18.48	19.76	20.96	19.37	20.09	19.06	17.61
75.0	17.55	17.52	15.66	13.78	15.43	16.29	15.23	15.47	14.91	12.87
78.0	12.97	12.84	11.40	9.749	11.41	12.12	11.44	11.43	11.03	8.972
81.0	8.782	8.722	7.596	6.385	7.900	8.439	7.945	7.793	7.571	5.769
84.0	5.180	5.143	4.410	3.941	4.929	5.290	4.879	4.685	4.588	3.387
87.0	2.502	2.454	2.085	2.040	2.550	2.745	2.369	2.265	2.210	1.674
90.0	1.222	1.142	1.075	1.046	1.132	1.231	0.8357	0.8404	0.6984	0.7012
93.0	1.011	1.032	1.025	1.108	1.011	0.9697	0.5194	0.5544	0.6165	0.6926
96.0	0.9905	1.039	1.039	1.150	1.011	1.018	0.5474	0.5541	0.6649	0.6857
99.0	0.9904	1.067	1.053	1.171	1.060	1.060	0.6027	0.5678	0.6648	0.6857
102.0	0.9904	1.108	1.135	1.226	1.108	1.115	0.6443	0.6163	0.7621	0.9343
105.0	1.011	1.150	1.177	1.309	1.164	1.164	0.6997	0.6578	0.8105	1.053
108.0	1.046	1.191	1.246	1.385	1.219	1.198	0.7551	0.7202	0.8521	1.163
111.0	1.101	1.240	1.281	1.461	1.274	1.247	0.8037	0.7617	0.9006	0.9703
114.0	1.157	1.275	1.336	1.489	1.316	1.288	0.8590	0.8378	0.9559	0.9627
117.0	1.191	1.323	1.364	1.524	1.371	1.337	0.9144	0.8587	1.004	0.9627
120.0	1.274	1.358	1.378	1.544	1.385	1.371	0.9697	0.9348	1.046	0.9834
123.0	1.288	1.399	1.420	1.565	1.406	1.406	1.018	0.9763	1.101	1.059
126.0	1.316	1.434	1.427	1.572	1.475	1.454	1.081	1.039	1.150	1.066
129.0	1.378	1.468	1.454	1.572	1.510	1.482	1.143	1.073	1.192	1.136
132.0	1.406	1.503	1.510	1.600	1.503	1.517	1.198	1.149	1.247	1.170
135.0	1.440	1.524	1.503	1.628	1.530	1.551	1.254	1.198	1.309	1.233
138.0	1.496	1.572	1.530	1.635	1.572	1.579	1.309	1.274	1.358	1.281
141.0	1.524	1.600	1.558	1.662	1.614	1.621	1.372	1.309	1.413	1.330
144.0	1.551	1.635	1.600	1.683	1.614	1.642	1.427	1.392	1.462	1.378
147.0	1.607	1.669	1.600	1.711	1.621	1.683	1.482	1.420	1.517	1.440
150.0	1.614	1.690	1.627	1.731	1.641	1.711	1.544	1.489	1.572	1.496
153.0	1.655	1.718	1.641	1.745	1.676	1.745	1.593	1.524	1.621	1.537
156.0	1.717	1.752	1.717	1.759	1.717	1.773	1.648	1.579	1.676	1.593
159.0	1.718	1.787	1.718	1.801	1.731	1.808	1.690	1.621	1.725	1.627
162.0	1.752	1.822	1.752	1.822	1.752	1.822	1.746	1.696	1.759	1.676
165.0	1.773	1.849	1.759	1.849	1.773	1.842	1.787	1.725	1.801	1.711
168.0	1.814	1.856	1.800	1.863	1.828	1.842	1.829	1.752	1.835	1.745
171.0	1.828	1.856	1.828	1.863	1.835	1.842	1.863	1.794	1.863	1.773
174.0	1.849	1.856	1.842	1.863	1.835	1.842	1.863	1.828	1.863	1.842
177.0	1.849	1.856	1.842	1.863	1.835	1.842	1.863	1.828	1.863	1.842
180.0	1.863	1.856	1.849	1.856	1.842	1.842	1.863	1.842	1.863	1.849
G/C	300.0	330.0								
0.0	96.25	96.09								
3.0	95.95	95.46								
6.0	95.10	94.94								
9.0	94.40	93.98								
12.0	93.26	92.93								
15.0	92.26	91.56								
18.0	91.10	90.62								
21.0	89.34	89.74								
24.0	87.45	88.25								
27.0	85.31	86.18								
30.0	82.96	83.63								

C Range: 0 - 360DEG
 C Interval: 30.0DEG
 Test Speed: HIGH
 Temperature: 25.3DEG
 Operators: WFW
 Test Date: 2022-12-15

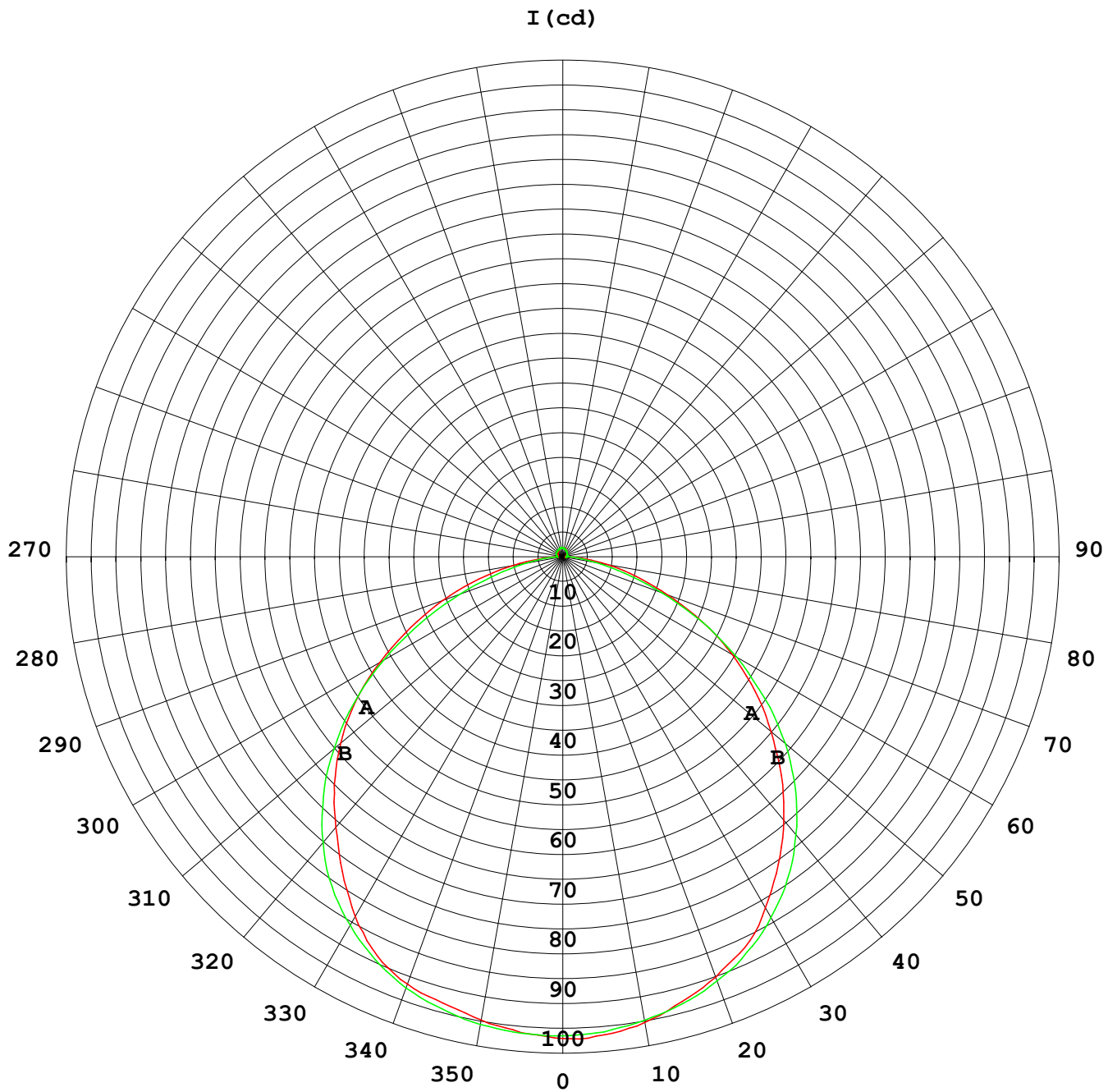
γ Range: 0 - 180DEG
 γ Interval: 1.0DEG
 Test System: EVERFINE GO-2000B_V1 SYSTEM V2.0.269
 Humidity: 65.0%
 Test Distance: 10.800m [K=1.0000]
 Remarks:

Photometric Data Table [cd]

33.0	80.62	80.47
36.0	78.16	76.78
39.0	75.11	72.71
42.0	71.43	68.65
45.0	67.34	64.32
48.0	62.64	60.32
51.0	57.83	56.25
54.0	52.49	51.97
57.0	46.93	47.39
60.0	40.99	42.36
63.0	35.28	37.53
66.0	29.96	32.40
69.0	24.88	27.20
72.0	20.11	22.23
75.0	15.60	17.21
78.0	11.51	12.69
81.0	7.723	8.556
84.0	4.483	4.900
87.0	2.009	2.182
90.0	0.6574	0.8194
93.0	0.6166	0.6026
96.0	0.6444	0.5887
99.0	0.6929	0.5887
102.0	0.7482	0.6094
105.0	0.7966	0.6301
108.0	0.8451	0.6785
111.0	0.8799	0.7271
114.0	0.9351	0.7756
117.0	0.9768	0.8448
120.0	1.018	0.8657
123.0	1.074	0.9349
126.0	1.115	0.9764
129.0	1.164	1.046
132.0	1.226	1.087
135.0	1.268	1.156
138.0	1.323	1.198
141.0	1.378	1.261
144.0	1.434	1.316
147.0	1.482	1.392
150.0	1.538	1.413
153.0	1.593	1.496
156.0	1.641	1.524
159.0	1.690	1.586
162.0	1.725	1.620
165.0	1.759	1.669
168.0	1.808	1.724
171.0	1.842	1.766
174.0	1.863	1.815
177.0	1.863	1.835
180.0	1.863	1.849

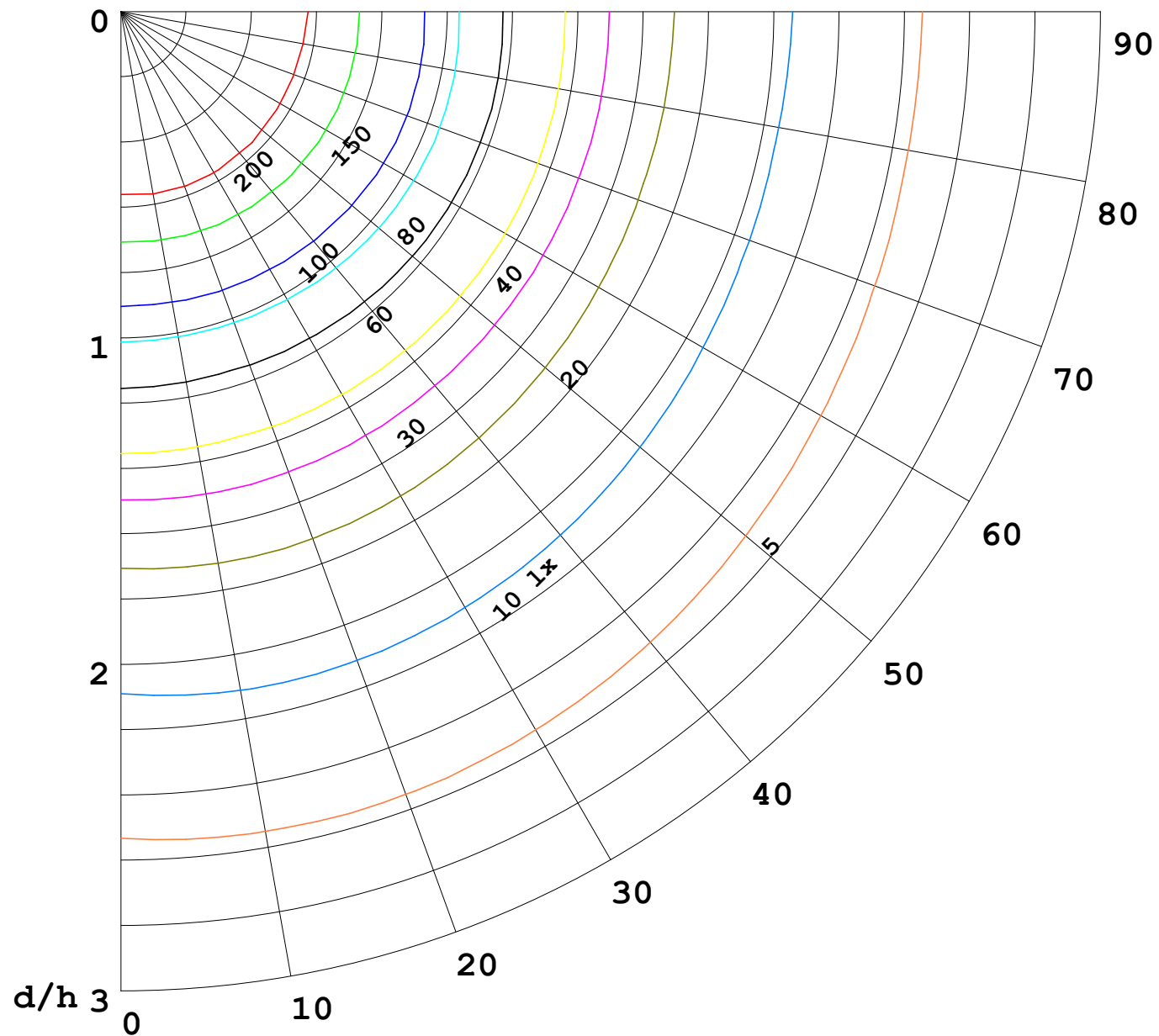
C Range: 0 - 360DEG
C Interval: 30.0DEG
Test Speed: HIGH
Temperature:25.3DEG
Operators:WFW
Test Date:2022-12-15

γ Range: 0 - 180DEG
γ Interval: 1.0DEG
Test System:EVERFINE GO-2000B_V1 SYSTEM V2.0.269
Humidity:65.0%
Test Distance:10.800m [K=1.0000]
Remarks:



1000 lm

$\kappa = 1$



F = 5000 lm
 K = 0.7
 Hcc = 0.0 m
 Hfc = 0.0 m
 Eave = 100 lx

	Pcc	Pw	Pfc
—	70	50	30
—	50	30	20

